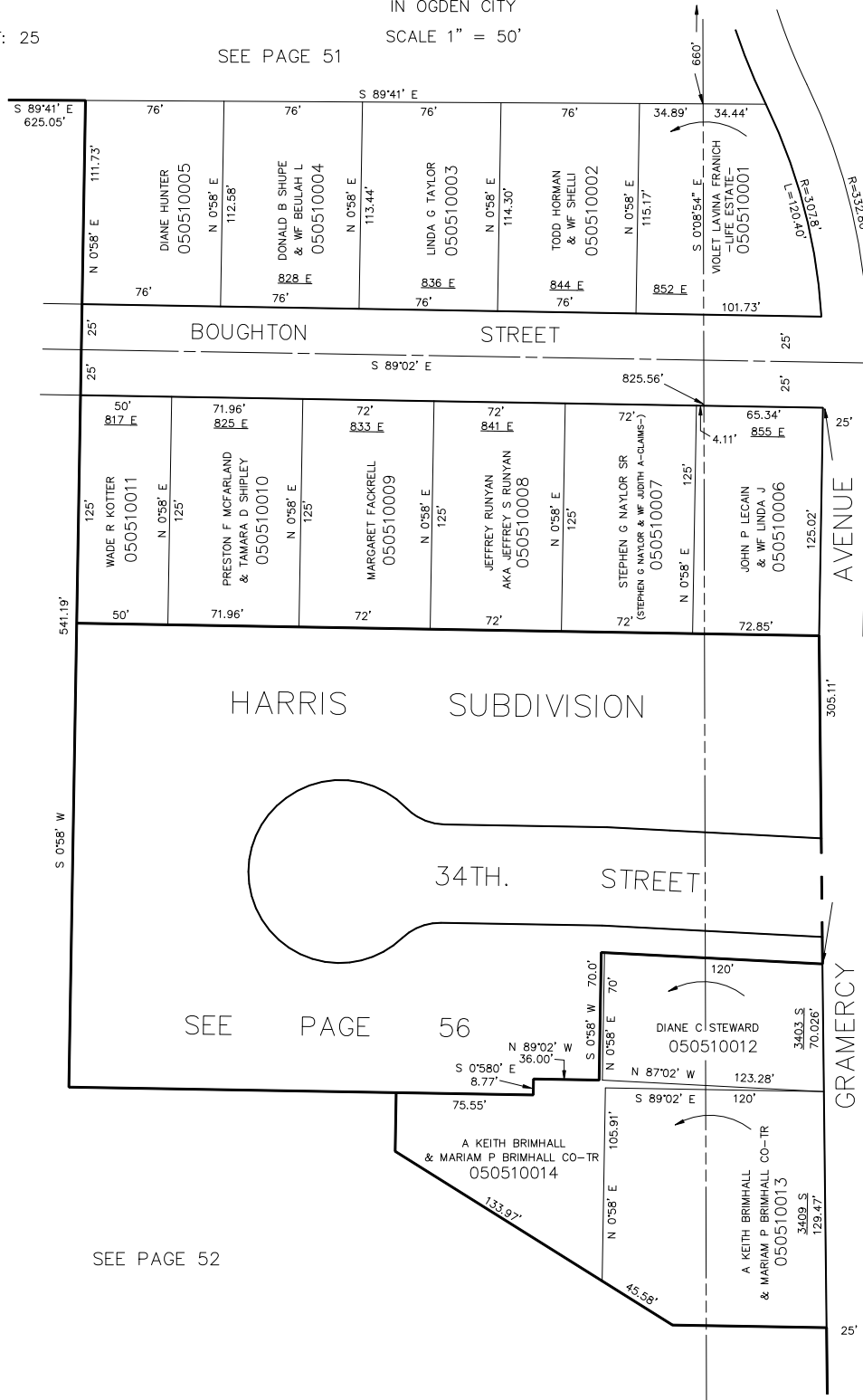


PART OF THE NW 1/4 OF
SECTION 4, T.5N., R.1W., S.L.B. & M.

IN OGDEN CITY
SCALE 1" = 50'

TAXING UNIT: 25

SEE PAGE 51



SEE PAGE 35

SEE PAGE 36

SEE PAGE 52

SEE

HARBERTSON

SUB. PAGE 53